

Kiosk Luminant Portrait Semi Outdoor

Reduce waiting lines, promote margin products and much more. Find out what other benefits the prestop kiosk can have for your company.





Kiosk Luminant portrait Semi Outdoor

Slim, stylish and efficient. The latest Evolution semi outdoor ordering kiosk from Prestop. Reduce waiting for lines, promote your margin products and offer your customer more crossselling opportunities. The kiosk is equipped with a small roof so a few drops of rain will cause no harm to the kiosk and it blocks the screens from (sun)light from above the kiosk. Ideal for use in spaces with glass walls, under roofing or in event tents. The Evolution semi outdoor kiosk is available as a single kiosk with one 32" high brightness screen or as double sided kiosk with one 32" high brightness screen and one 27" screen. Prestop PCAP touch technology ensures a smooth experience and offers ten simultaneous touchpoints.

Kiosk Luminant portrait 32" Semi Outdoor

Dual or single sided touchscreen. Surface entirely made of glass, under which the touch screen is fitted: edge-to-edge. This design ensures less distraction of the screen, is easy to clean and gives the kiosk a premium look that attracts attention. Although focus is on design, it is also made very robust with 4 mm hardened, clear glass.



Features

- User-friendly
- Borderless design
- Glass covers complete front
- Easy to clean
- Both sides operational
- Optional LED strip
- Tight finish
- Modular expandible: ticket printer, barcode reader, proximity sensor, Wifi adapter etc.

| | |
|---|------------------------------|
| Display | 32" Full HD (1080x1920) |
| Brightness | 330 nit |
| Touch screen | PCAP, 10 touch points |
| Glass | 4 mm, clear, hardened |
| Housing | Metal |
| Color | Black, white, optional RAL |
| Connections | VGA, DVI, HDMI |
| Operating hours | 16/7 |
| Maximum PC size (WxHxD - mm) | 116 x 52 x 112 mm |
| Maximum PC size (WxHxD - inches) | 4.57 x 2.05 x 4.41 in |
| Dimensions (WxHxD - mm) | 829 x 1998 x 594 mm |
| Dimensions (WxHxD - inches) | 32.63 x 78.66 x 23.38 in |
| Weight | 130 kg / 286.60 lbs |
| Partnumber | PT-KIOSK-LT32P-M-SEMIOUTDOOR |

Kiosk Luminant portrait 27" Semi Outdoor

Dual or single sided touchscreen. Surface entirely made of glass, under which the touch screen is fitted: edge-to-edge. This design ensures less distraction of the screen, is easy to clean and gives the kiosk a premium look that attracts attention. Although focus is on design, it is also made very robust with 4 mm hardened, clear glass.



Features

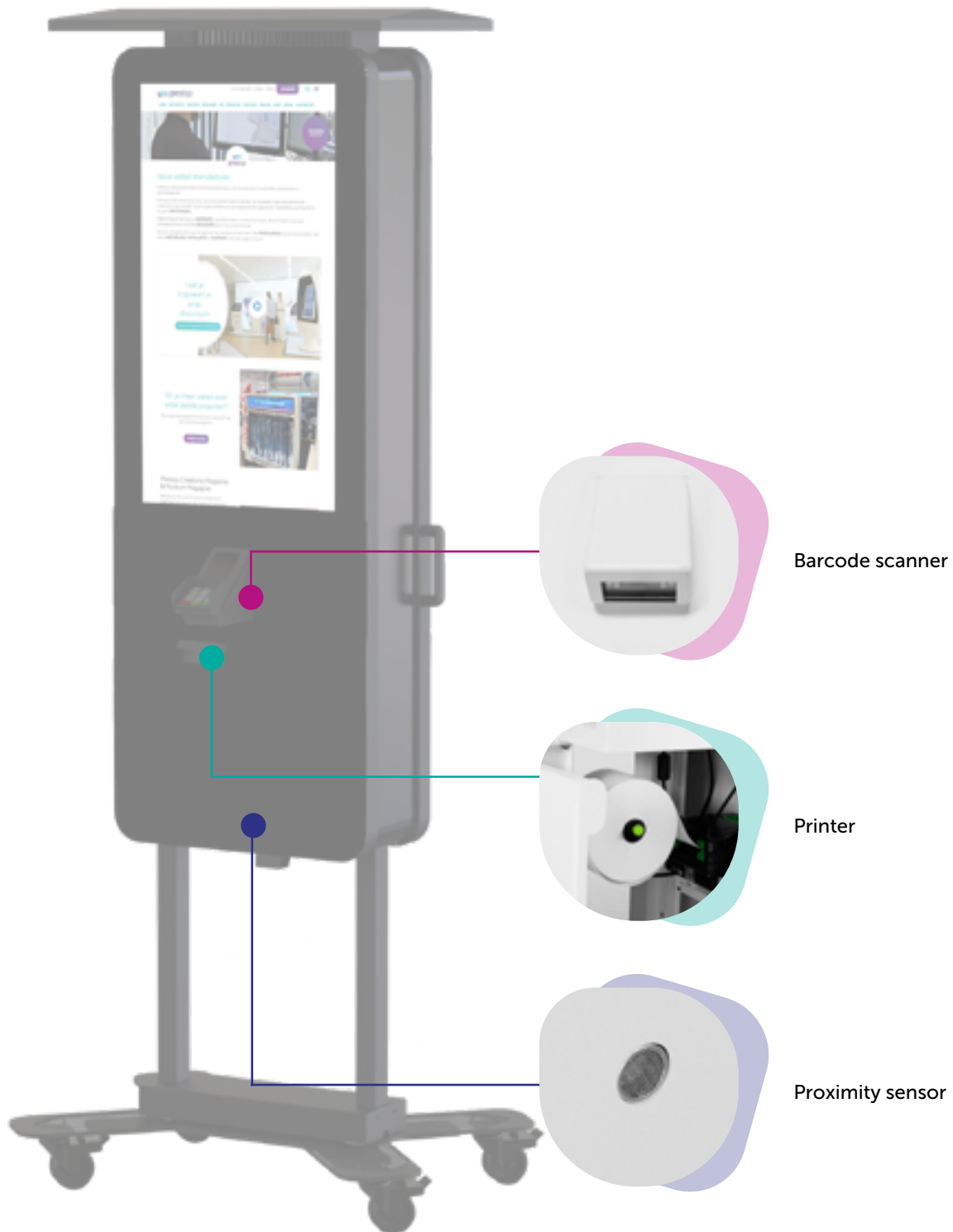
- User-friendly
- Borderless design
- Glass covers complete front
- Easy to clean
- Both sides operational
- Optional LED strip
- Tight finish
- Modular expandible: ticket printer, barcode reader, proximity sensor, Wifi adapter etc.

| | |
|----------------------------------|------------------------------|
| Display | 32" Full HD (1080x1920) |
| Brightness | 330 nit |
| Touch screen | PCAP, 10 touch points |
| Glass | 4 mm, clear, hardened |
| Housing | Metal |
| Color | Black, white, optional RAL |
| Connections | VGA, DVI, HDMI |
| Operating hours | 16/7 |
| Maximum PC size (WxHxD - mm) | 116 x 52 x 112 mm |
| Maximum PC size (WxHxD - inches) | 4.57 x 2.05 x 4.41 in |
| Dimensions (WxHxD - mm) | 829 x 1998 x 594 mm |
| Dimensions (WxHxD - inches) | 32.63 x 78.66 x 23.38 in |
| Weight | 130 kg / 286.60 lbs |
| Partnumber | PT-KIOSK-LT27P-M-SEMIOUTDOOR |

Modular

In addition prestop offers the possibility to expand the possibilities with the modular kiosk. This offers various options like a barcode scanner, printer or proximity sensor. Due to the modular design the kiosk is ready for the future!

Multiple possibilities to expand your kiosk



Upgrade the Kiosk

Optional Accessories

- Signage
- 4G / WiFi
- Flightcase
- Industrial printer
- Slim design printer
- Proximity sensor
- Barcode scanner
- RFID reader
- Mini PC
- Keyboard and mouse
- 3D camera
- Omnitapps
- SiteKiosk
- Professional installation



Signage

Customize the kiosk according to your corporate identity.



4G / WiFi

Use the kiosk at remote locations without an internet connection: use 4G as an alternative way to connect to the internet.



Industrial kiosk printer

The industrial printer works with larger paper rolls to ensure shorter service times.



Omnitapps Selector

Share product information with photos, videos, information in a fast and easy way. Make the connection to your webshop to generate sales. Usable for products, services, educational courses, etc.



prestop

Kiosk Luminant portrait Semi Outdoor

Prestop integrates PCAP touch foil from 10" to 85" on glass in every size and shape. With our own cleanroom and our experience, we supply to many screen manufacturers, architects, interior builders, AV companies and end users who are interested in customized interactive displays. We can laminate PCAP technology on glass up to 12 mm thickness.

- Certified cleanroom (ISO 14644)
- Dutch design
- Assembled in The Netherlands
- Transport and installation worldwide

Prestop is your specialist for interactive experiences since 1993!

We develop and produce touch tables, information kiosks, touch screens, outdoor kiosks, industrial solutions and video walls. Prestop is also specialized in custom projects.

