

Industrial Kiosk Extreme 19" - 32"

Easy to use, efficient and built to last. The
prestop industrial line-up

Solid industrial design



prestop
get touched

Unique selling points

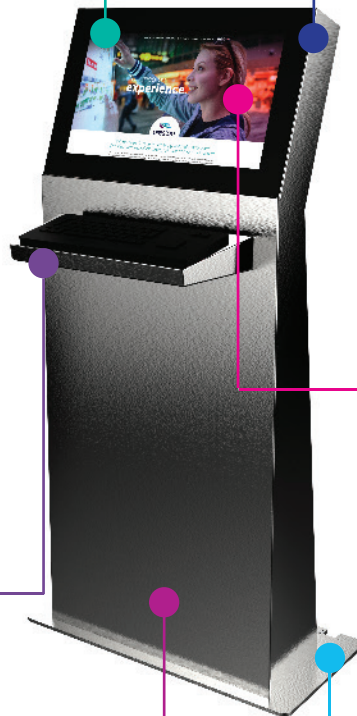
Industrial kiosk 19" - 32"



Edge-to-edge, bezel free, hardened 4 mm (plexi)glass



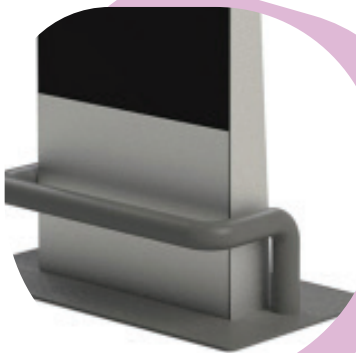
Available in different colors



high contrast display with 10 simultane touch points



Keyboard (optional)



Protective bar (optional)



Wheels (optional)



Built to last Industrial Kiosk

Prestop offers solid industrial kiosks in different sizes. Protective bar, tempered glass or Lexan. Stand alone or wall mounted. Temperature control when required. For every need we have a solution. The Extreme range is equipped with edge-to-edge PCAP touch technology with 10 simultaneous touch points. Making sure the touch experience will be smooth and fast. At the same time easy to clean because of a single glass plate which covers the entire front. Completely dust -and waterproof. Internal space is closed by hygiene locks. The kiosk can be supplied in stainless steel and therefore is suitable for food producing facilities. Expand possibilities of the kiosk with NFC / RFID reader, (thermal A4) printer, barcode scanner, keyboard, 4G internet puck and more.

Industrial Kiosk Landscape 32" Extreme

The touch surface is entirely made of glass, under which the touch screen is fitted: edge-to-edge. This design ensures less distraction of the screen and is easy to clean. Extremely robust with 4 mm hardened anti-glare glass or Lexan.



Features

- PCAP touch technology
- Easy to operate
- Easy to clean
- Sturdy steel kiosk with powdercoat finish
- Tight finish
- Easy to transport
- Modular: Upgrade this kiosk with Keyboard, Barcode scanner, cooling / heating module, 4G Puck, Wheels, Protective bar

Display	32" Full HD (1920x1080)
Brightness	400 nit
Touch screen	PCAP, 10 touch points
Glass	4 mm
Housing	Metal
Color	Black, white, optional RAL
Connections	VGA, DVI, HDMI
Operating hours	24/7
Maximum PC size (WxHxD - mm)	220 x 350 x 60 mm
Maximum PC size (WxHxD - inches)	8.66 x 13.78 x 2.36 in
Dimensions (WxHxD - mm)	1300 x 1090 x 650 mm
Dimensions (WxHxD - inches)	19.3 - 24.3 x 57.4 x 13.8 in
Weight	116.5 kg / 257.06 lbs
Partnumber	PT-KIOSK-EX32L

Industrial Kiosk Landscape 22" Extreme

The touch surface is entirely made of glass, under which the touch screen is fitted: edge-to-edge. This design ensures less distraction of the screen and is easy to clean. Extremely robust with 3-4 mm hardened anti-glare glass or Lexan.



Features

- PCAP touch technology
- Easy to operate
- Easy to clean
- Sturdy steel kiosk with powdercoat finish
- Tight finish
- Easy to transport
- Modular: Upgrade this kiosk with Keyboard, Barcode scanner, cooling / heating module, 4G Puck, Wheels, Protective bar

Display	22" Full HD (1920x1080)
Brightness	250 nit
Touch screen	PCAP, 10 touch points
Glass	3-4 mm
Housing	Stainless steel / metal
Color	Black, white, optional RAL
Connections	VGA, DVI, HDMI
Operating hours	24/7
Maximum PC size (WxHxD - mm)	240 x 250 x 65 mm
Maximum PC size (WxHxD - inches)	9.4 x 9.8 x 2.5 in
Dimensions (WxHxD - mm)	700 x 1376 x 350 mm
Dimensions (WxHxD - inches)	27.56 x 54.17 x 13.78 in
Weight	58 kg / 127.87 lbs
Partnumber	PT-KIOSK-EX22L-X

Industrial Kiosk Landscape 22" Extreme

Slim and robust kiosk with optional keyboard and trackerball or glidepad. Also available with height adjustable lift. The touch surface is entirely made of glass, under which the touch screen is fitted: edge-to-edge with hardened glass or Lexan.



Features

- PCAP touch technology
- Available with height adjustable lift
- Easy to operate
- Easy to clean
- Sturdy INOX kiosk with optional coating
- Tight finish
- Easy to transport
- Modular: Upgrade this kiosk with Keyboard, 4G Puck

Display	22" Full HD (1920x1080)
Brightness	250 nit
Touch screen	PCAP, 10 touch points
Glass	3-4 mm
Housing	Metal / stainless steel
Color	Black, white, optional RAL
Connections	VGA, DVI, HDMI
Operating hours	24/7
Maximum PC size (WxHxD - mm)	300 x 250 x 80 mm
Maximum PC size (WxHxD - inches)	11.81 x 9.84 x 3.15 in
Dimensions (WxHxD - mm)	545 x 1279 - 1510 x 505 mm
Dimensions (WxHxD - inches)	21.46 x 50.35 - 59.45 x 19.88 in
Weight	45 kg / 99.21 lbs
Partnumber	PT-KIOSK-EX22L-Y
Partnumber + Keyboard	PT-KIOSK-EX22L-Y-KB
Partnumber + Lift	PT-KIOSK-EX22L-Y-LIFT
Partnumber + Keyboard & Lift	PT-KIOSK-EX22L-Y-KB-LIFT

Industrial Kiosk Landscape 22" Extreme

Slim and robust kiosk for wall mounting with optional keyboard and trackerball or glidepad. The touch surface is entirely made of glass, under which the touch screen is fitted: edge-to-edge with hardened glass or Lexan.



Landscape (16:9)

Features

- PCAP touch technology
- Available with height adjustable lift
- Easy to operate
- Easy to clean
- Sturdy INOX kiosk with optional coating
- Tight finish
- Easy to transport
- Modular: Upgrade this kiosk with Keyboard 4G Puck, Wheels

Display	22" Full HD (1920x1080)
Brightness	250 nit
Touch screen	PCAP, 10 touch points
Glass	3-4 mm
Housing	Metal / stainless steel
Color	Black, white, optional RAL
Connections	VGA, DVI, HDMI
Operating hours	24/7
Maximum PC size (WxHxD - mm)	300 x 250 x 80 mm
Maximum PC size (WxHxD - inches)	11.81 x 9.84 x 3.15 in
Partnumber	PT-KIOSK-EX22L-Y-WALL
Dimensions (WxHxD - mm)	545 x 821 x 278 mm
Dimensions (WxHxD - inches)	21.46 x 32.32 x 10.94 in
Weight	41 kg / 90.39 lbs
Partnumber + Keyboard	PT-KIOSK-EX22L-Y-KB-WALL
Dimensions (WxHxD - mm)	545 x 821 x 505 mm
Dimensions (WxHxD - inches)	21.46 x 32.32 x 19.88 in
Weight	44 kg / 97 lbs

Custom Industrial Kiosks Extreme

Industrial kiosk 19" - 32"



Upgrade the Kiosk

Optional Accessories

- Signage
- Wheel set
- 4G / WiFi
- Flightcase
- Proximity sensor
- Barcode scanner
- RFID reader
- Cardreader
- Mini PC
- Keyboard and mouse
- Protective bar
- Camera
- Omnitapps
- SiteKiosk
- Professional installation



Signage

Customize the kiosk according to your corporate identity.



Wheel set

Add a wheel set to make transport easier.



4G / WiFi

Use the kiosk at remote locations without an internet connection: use 4G as an alternative way to connect to the internet.



Flightcase

Make transport easy with a prestop Flightcase. It offers roll on / roll off functionality for quick loading and unloading when the kiosk is equipped with the optional wheel set.



prestop

Industrial kiosk 19" - 32"

Prestop integrates PCAP touch foil from 10" to 85" on glass in every size and shape. With our own cleanroom and our experience, we supply to many screen manufacturers, architects, interior builders, AV companies and end users who are interested in customized interactive displays. We can laminate PCAP technology on glass up to 12 mm thickness.

- Certified cleanroom (ISO 14644)
- Dutch design
- Assembled in The Netherlands
- Transport and installation worldwide

Prestop is your specialist for interactive experiences since 1993!

We develop and produce touch tables, information kiosks, touch screens, outdoor kiosks, industrial solutions and video walls. Prestop is also specialized in custom projects.



prestop

get touched